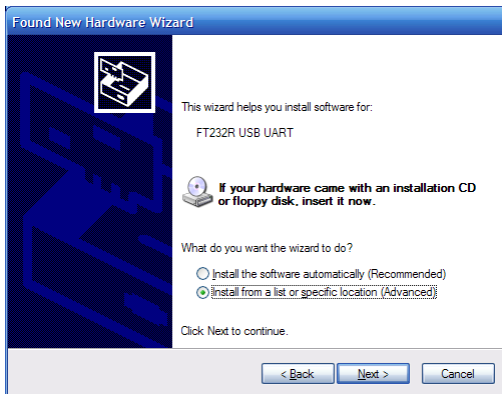


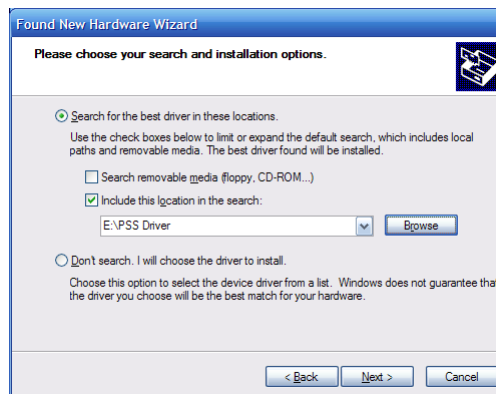
Connect the device to a spare USB port on your PC. The Found New Hardware Wizard will launch. Select "No, not this time" from the options available and then click "Next" to proceed with the installation.



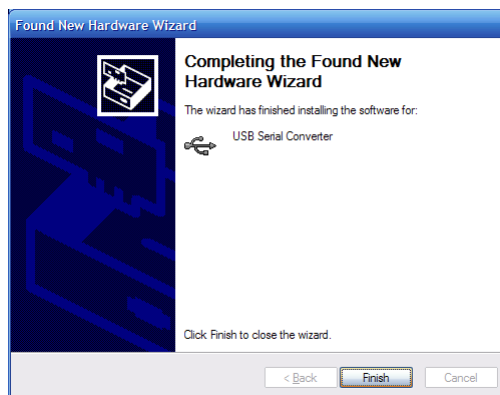
Select "Install from a list or specific location (Advanced)" as shown below and then click "Next".



Select "Search for the best driver in these locations" and enter the file path in the combo box ("E:\PSS Driver" in the example below) or browse to it by clicking the browse button. Click "Next".



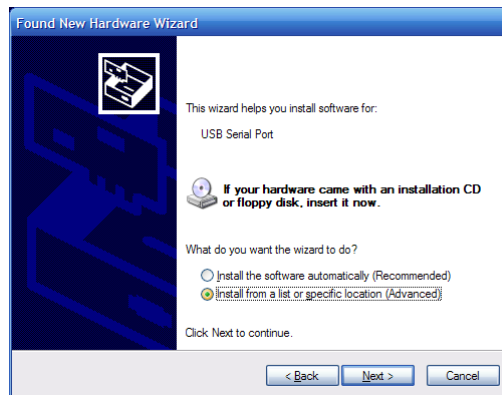
Windows will copy the required driver files. Windows should then display a message indicating that the installation was successful. Click "Finish" to complete the installation.



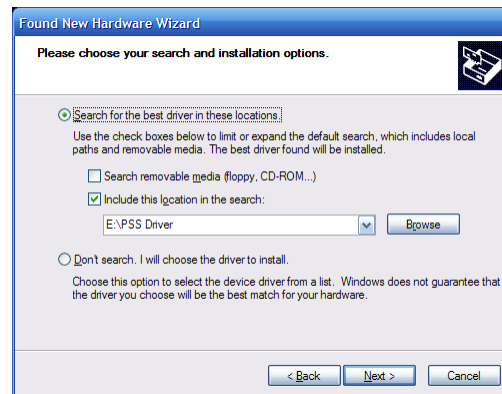


The Found New Hardware Wizard will launch automatically to install the COM port emulation drivers. As above, select "No, not this time" From the options and click "Next" to proceed with the installation.

Select "Install from a list or specific location (Advanced)" as shown below and then click "Next".



Select "Search for the best driver in these locations" and enter the file path in the combo box ("E:\PSS Driver" in the example below) or browse to it by clicking the browse button. Click "Next."



Windows XP copies the required driver files. Windows should then display a message indicating that the installation was successful. Click "Finish" to complete the installation.