



# **LGB West Side Lumber Company**

## **Shay**

Phoenix Sound Systems, Inc.

3514 West Liberty Road

Ann Arbor MI 48103

[www.phoenixsound.com](http://www.phoenixsound.com)

phone: 800-651-2444

fax: 734-662-0809

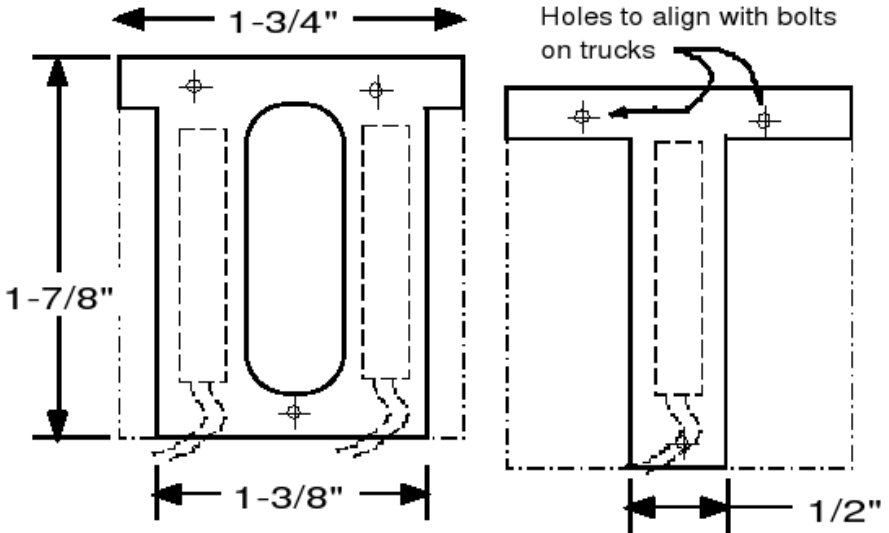
e-mail: [phoenixsound@phoenixsound.com](mailto:phoenixsound@phoenixsound.com)

©2000-2008 Phoenix Sound Systems, Inc.

## Reed Switch Mounting

Fabricate reed mounting plates out of .06" brass stock. These will bolt on to the trucks. Reed switches can be glued on to the plates. Glue two rare earth magnets to the middle of one axle on the truck with the centered reed switch.

Route reed switch wires through tubing with existing truck wiring or route through additional tubing.

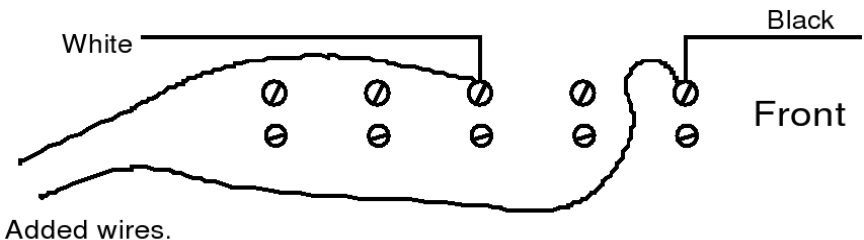


## The Volume Control Switch

Mount on the floor of the cab. 3/8" from the end of the brake lever is a good spot.

## Track Power Wiring

Under the ash pan there is a terminal block. Add wires as indicated below to connect to the BigSound™ track terminals.



## Weight

The existing cylindrical weight needs to be removed to make room for the sound system. A replacement lead weight 1" x 1" x1.25" can be placed back in the bunker with the sound system.

## Speaker Placement

The SP-3.0 speaker [p/n: 820-770] can be placed on the wall of the bunker facing the cab. Grind a small flat on the edge of the speaker. To aid in drilling the speaker holes, make a template of your hole pattern and hold this in place against the bunker wall. Run the speaker wires to the engineers side.

## Component Placement

Place the components in the bunker as shown below, viewed from above.

